



'88

Art. Nr. 202.80
1.88

FAHRGESTELL Chassis

240-250-350-500
MX – ENDURO



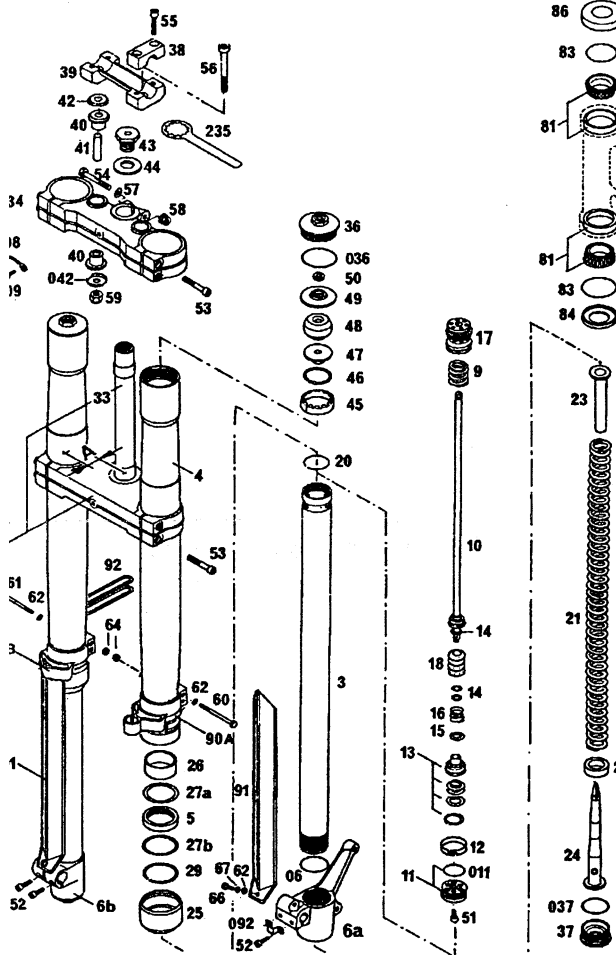
TELEGABEL / FRONT FORK WHITE POWER

| BILD. TEILENUMMER | | | | BILD. TEILENUMMER | | | |
|-------------------|-------------------|-----|----|-------------------|----------------|----------------|---|
| FIG. PART NUMBER | | | | FIG. PART NUMBER | | | |
| STK. | | | | STK. | | | |
| QTY. | | | | QTY. | | | |
| 1 565.01.001.444 | | | | 1 | 34 | 501310 | 1 |
| 350 MX, 500 MX | | | | | 36 | 564.01.036.000 | 2 |
| 2A | 545.01.002.400 | 250 | 1 | 036 | 0770 430030 | | 2 |
| 2A | 565.01.002.400 | 500 | 1 | 37 | 564.01.037.000 | | 2 |
| 2B | 545.01.102.400 | 250 | 1 | 037 | 0770 340030 | | 2 |
| 2B | 565.01.102.400 | 500 | 1 | 38 | 564.01.038.000 | | 2 |
| 3 | 501.01.003.200 | | 2 | 39 | 564.01.039.000 | | 1 |
| 4 | 580.01.004.000 | | 2 | 40 | 564.01.040.000 | | 4 |
| 5 | 564.01.005.000 | | 2 | 41 | 564.01.041.000 | | 2 |
| 6A | 565.01.006.400 | | 1 | 42 | 564.01.042.000 | | 2 |
| 6B | 564.01.106.000 | | 1 | 042 | 564.01.142.000 | | 2 |
| 06 | 0770 380020 | | 2 | 43 | 564.01.043.000 | | 1 |
| 9 | 501.01.009.200 | | 2 | 44 | 564.01.044.000 | | 1 |
| 10 | 543.01.010.000 | | 2 | 45 | 564.01.045.000 | | 2 |
| 11 | 501.01.011.200 | | 2 | 46 | 564.01.046.000 | | 2 |
| 011 | 0770 260015 | | 2 | 47 | 564.01.047.000 | | 2 |
| 12 | 564.01.012.000 | | 2 | 48 | 564.01.048.000 | | 2 |
| 13 | 502.01.013.444 | 250 | 2 | 49 | 564.01.049.000 | | 2 |
| 13 | 565.01.013.444 | 500 | 2 | 50 | 564.01.050.000 | | 4 |
| 14 | 564.01.014.001 | | 2 | 51 | 0912 060103 | | 2 |
| 14 | 564.01.014.003 | | 2 | 52 | 0912 060253 | | 4 |
| 14 | 564.01.014.000 | | 2 | 53 | 0912 080353 | | 8 |
| 14 | 564.01.014.100 | | 4 | 54 | 0931 080553 | | 1 |
| 15 | 490.01.015.601 | | 2 | 55 | 0912 080303 | | 4 |
| 15 | 490.01.015.603 | | 2 | 56 | 0984 100652 | | 2 |
| 15 | 490.01.015.605 | | 2 | 57 | 0125 080003 | | 1 |
| 15 | 490.01.015.610 | | 6 | 58 | 543.10.086.000 | | 1 |
| 16 | 502.01.016.400 | | 2 | 59 | 0985 100003 | | 2 |
| 17 | 502.01.017.044 | | 2 | 60 | 0931 050403 | | 2 |
| 18 | 502.01.015.004 | | 12 | 61 | 0931 050453 | | 2 |
| 20 | 564.01.020.000 | | 2 | 62 | 0125 050003 | | 6 |
| 21 | 545.01.021.400 | | 2 | 64 | 0985 050003 | | 4 |
| | WP 4443 | 250 | | 66 | 0933 050123 | | 2 |
| | 21 565.01.021.400 | | 2 | 67 | 0797 050003 | | 2 |
| | WP 4545 | 500 | | 81 | 542.01.081.000 | | 2 |
| 22 | 564.01.022.000 | | X | 83 | 0770 021300 | | 2 |
| 22 | 564.01.022.100 | | X | 84 | 501.01.084.000 | | 1 |
| 22 | 564.01.022.200 | | X | 86 | 542.01.086.000 | | 1 |
| 23 | 545.01.023.000 | | 2 | 90A | 565.01.090.000 | | 1 |
| 24 | 501.01.024.244 | | 2 | 90B | 565.01.190.000 | | 1 |
| 25 | 564.01.025.000 | | 2 | 91 | 565.01.091.000 | | 2 |
| 26 | 564.01.026.000 | | 2 | 92 | 543.01.092.000 | | 1 |
| 27A | 564.01.027.000 | | 2 | 092 | 565.01.092.000 | | 1 |
| 27B | 564.01.127.000 | | 2 | 208 | 571.01.008.000 | | 1 |
| 29 | 564.01.029.000 | | 2 | 209 | 0933 060163 | | 1 |
| 32 | 580.01.032.044 | | 1 | 235 | 542.12.035.000 | | 1 |
| 33 | 501.01.033.000 | | 1 | | | | |

ALLE TEILE AUSSER
All items w./except of 81-86,235

3-5,6a,06-29,
36-037,45-52

3-5,6b,06-29,
36-037,54-52



FUELLMENGE: 650 ccm SAE 10 STOSSDAEMPFEROEL

PRO GABELHOLM

Oil Quantities: 650 cc shock absorber oil

SAE 10 per fork leg

X = NACH BEDARF/as required

LENKER, ARMATUREN / HANDLEBAR, CONTROLS

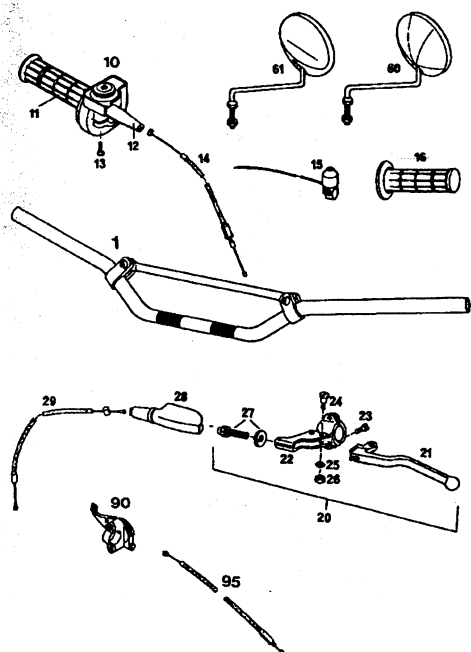


BILD. TEILENUMMER
FIG. PART NUMBER

| | |
|----|------------------------|
| 1 | 565.02.001.044 |
| 10 | 580.02.010.000 |
| 11 | 565.02.003.000 |
| 12 | 540.02.016.000 |
| 13 | 0084 050203 |
| 14 | 501.02.091.000 PHBE 38 |
| | 565.02.091.000 BING 38 |
| 14 | 500.02.591.100 |
| | VHSB 37/38 |
| 15 | 510.11.198.000 |
| 16 | 565.02.052.000 |
| 20 | 540.02.040.000 |
| 21 | 540.02.055.000 |

STK.
QTY.

BILD. TEILENUMMER
FIG. PART NUMBER

| | |
|----|------------------------|
| 22 | 542.02.023.000 |
| 23 | 0964 050163 |
| 24 | 510.02.028.000 |
| 25 | 0125 060003 |
| 26 | 0934 060003 |
| 27 | 510.02.024.000 |
| 28 | 510.02.026.000 |
| 29 | 545.02.090.000 250 |
| 29 | 565.02.090.000 350.500 |
| 60 | 120.12.025.100 |
| 61 | 544.12.025.028 |
| 90 | 520.02.059.000 |
| 95 | 570.02.595.000 |

STK.
QTY.

X = NACH BEDARF/as required

88-500.02.1

HANDBREMSZYLINDER / HAND BRAKE CYLINDER

MAGURA

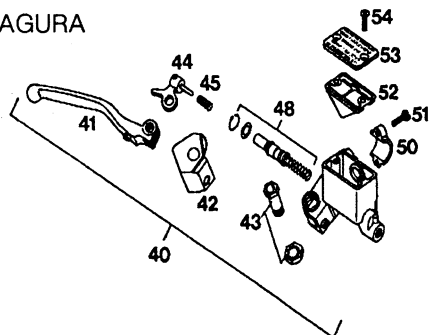


BILD. TEILENUMMER
FIG. PART NUMBER

| | |
|----|----------------|
| 40 | 565.13.001.544 |
| 41 | 565.13.020.500 |
| 42 | 565.13.026.500 |
| 43 | 565.13.015.500 |
| 44 | 565.13.051.500 |
| 45 | 565.13.052.500 |
| 48 | 565.13.050.500 |
| 50 | 565.13.011.500 |
| 51 | 0084 060203 |

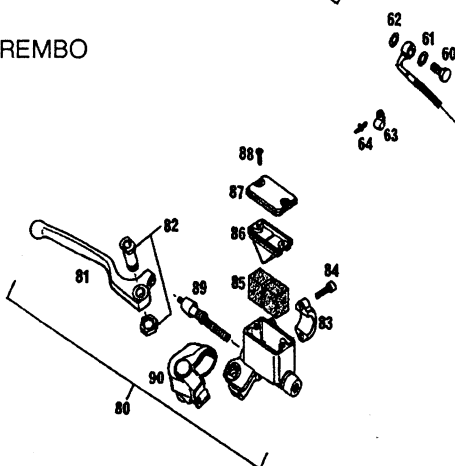
STK.
QTY.

BILD. TEILENUMMER
FIG. PART NUMBER

| | |
|----|----------------|
| 52 | 565.13.009.500 |
| 53 | 565.13.012.500 |
| 54 | 0965 050163 |
| 60 | 502.13.025.000 |
| 61 | 420.13.026.000 |
| 62 | 420.13.226.000 |
| 63 | 570.13.070.100 |
| 64 | 570.13.071.000 |

STK.
QTY.

BREMBO



| | |
|----|----------------|
| 80 | 544.13.001.144 |
| 81 | 544.13.020.000 |
| 82 | 544.13.015.000 |
| 83 | 544.13.011.000 |
| 84 | 0912 060203 |
| 85 | 544.13.016.000 |

| |
|---|
| 1 |
| 1 |
| 1 |
| 1 |
| 2 |
| 2 |

| | |
|----|----------------|
| 86 | 544.13.009.000 |
| 87 | 544.13.012.000 |
| 88 | 0965 040123 |
| 89 | 544.13.050.100 |
| 90 | 544.13.026.000 |

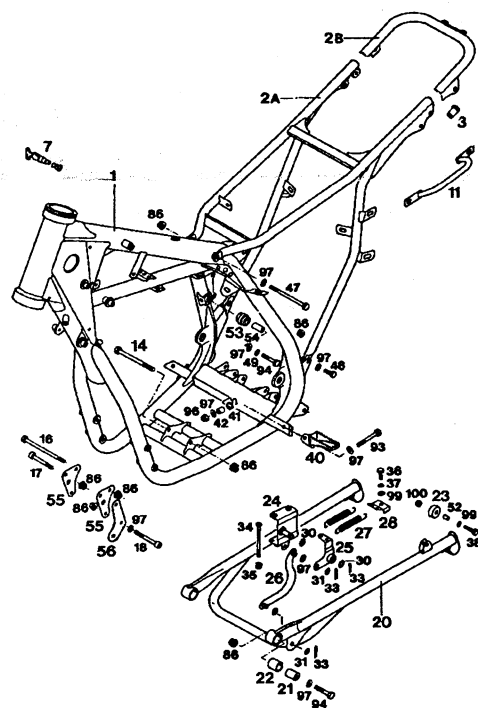
| |
|---|
| 1 |
| 1 |
| 2 |
| 1 |
| 1 |

88-500.02.2

TELEGABEL / FRONT FORK MARZOCCHI

| BILD. FIG. | TEILENUMMER PART NUMBER | STK. QTY. |
|------------|--|-----------|
| -- | 545.01.000.444 | 1 |
| | GABEL KPL./ front fork cpl. | |
| 1-141 | 131005 | 1 |
| | GABELBEINE PAAR/pair of fork legs | |
| 4 | 528123 | 2 |
| 17 | 701059 | 2 |
| 18 | 514761 | 2 |
| 18A | 514762 | 2 |
| 19 | 507301 | 2 |
| 20 | 533180 | 2 |
| 22 | 528053 | 2 |
| 23 | 523082 | 2 |
| 24 | 503346AD | 1 |
| 25 | 503364AD | 1 |
| 26 | 850001 | 2 |
| 40 | 520131 | 2 |
| 43 | 519025 | 2 |
| 43A | 519034 | 2 |
| 51 | 528122 | 2 |
| 52 | 522050 | 2 |
| 53 | 803609 | 1 |
| 53A | 803607 | 1 |
| 55 | 0985 060003 | 4 |
| 56 | 538032 | 2 |
| 58 | 538031 | 2 |
| 59 | 536053 | 2 |
| 62 | 518577 | 2 |
| 66 | 0125 060003 | 4 |
| 68 | 560001EE | 2 |
| 84 | 532108 | 2 |
| 99 | 528073 | 2 |
| 117A | 506647 | 1 |
| 117 | 506648 | 1 |
| 118 | 522175CD | 2 |
| 139 | 539016 | 2 |
| 141 | 709005AD | 2 |
| -- | GABELBRUECKEN UND ANBAUTEILE WHITE POWER/ fork plates and accessories, see Front White Power | |

RAHMEN / FRAME

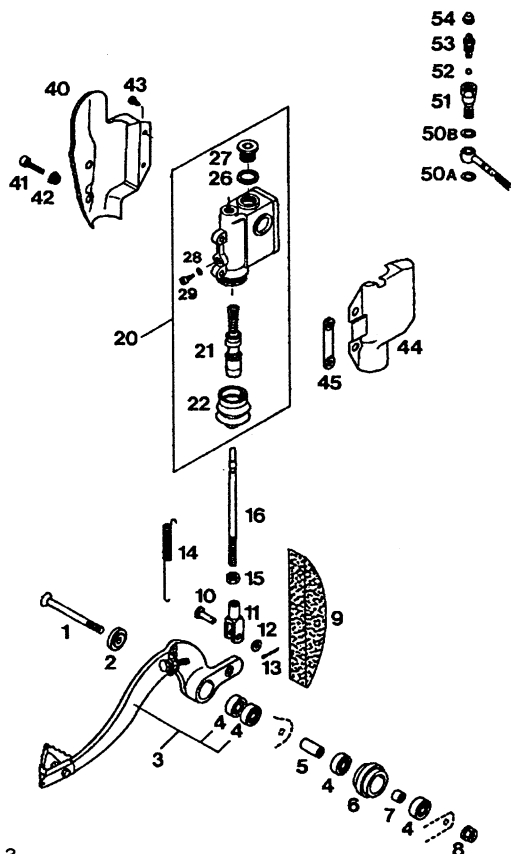


| BILD. FIG. | TEILENUMMER PART NUMBER | STK. QTY. | BILD. FIG. | TEILENUMMER PART NUMBER | STK. QTY. |
|---------------|----------------------------|--------------|---------------|----------------------------|--------------|
| 1 | 545.03.001.400 250 MX | 1 | 34 | 0991 060753 | 2 |
| 1 | 545.03.101.400 250 END | 1 | 35 | 565.09.064.000 | 2 |
| 1 | 565.03.001.400 350/500 | 1 | 36 | 0933 060163 | 1 |
| 2A | 565.03.002.400 250/500 MX | 1 | 37 | 0797 060003 | 1 |
| 2B | 555.03.002.400 250/350 | 1 | 38 | 0931 060353 | 1 |
| | ENDURO | | 40 | 502.03.040.000 L/S | 1 |
| 3 | 550.03.080.000 | 2 | -- | 502.03.140.000 R/S | 1 |
| 7 | 440.03.007.000 | X | 41 | 502.03.041.000 L/S | 1 |
| 11 | 502.12.011.000 | 1 | -- | 502.03.141.000 R/S | 1 |
| -- | 502.12.111.000 | 1 | 42 | 571.03.225.000 | 2 |
| 14 | 0931 080903 250 | 1 | 47 | 0931 080903 | 1 |
| 14 | 0931 080753 350/500 | 1 | 48 | 0933 080253 | 2 |
| 16 | 0931 081103 | 1 | 49 | 0797 080003 | 1 |
| 17 | 0912 080553 250 | 3 | 52 | 565.03.079.051 | 1 |
| | 350/500 | 2 | 53 | 490.03.053.000 | 1 |
| 18 | 0912 080703 250 | 1 | 54 | 490.03.051.000 | 1 |
| 18 | 0912 080603 350/500 | 2 | 55 | 565.03.055.000 | 2 |
| 20 | 502.03.022.000 | 1 | 56 | 565.05.073.000 350/500 | 1 |
| 21 | 570.03.023.000 | 2 | 86 | 543.10.086.000 | 9 |
| 22 | 120.03.041.000 | 2 | 93 | 0931 080503 | 2 |
| 23 | 502.03.024.000 | 2 | 94 | 0931 080353 | 2 |
| 24 | 502.03.026.000 | 1 | 96 | 0985 080003 | 2 |
| 25 | 502.03.027.000 | 1 | 97 | 0125 080003 | 10 |
| 26 | 502.03.127.000 | 1 | 99 | 0125 060003 | 2 |
| 27 | 100.03.021.000 | 2 | 100 | 0985 060003 | 1 |
| 28 | 502.03.227.000 | 1 | | | |
| 30 | 420.13.226.000 | 2 | | | |
| 31 | 502.03.028.000 | 2 | | | |
| 33 | 0094 020203 | 3 | | | |

X = NACH BEDARF/as required

88-555.03.1

FUSSBREMSBETAETIGUNG / REAR BRAKE CONTROL



| BILD. FIG. | TEILENUMMER PART NUMBER | STK. QTY. | BILD. FIG. | TEILENUMMER PART NUMBER | STK. QTY. |
|---------------|----------------------------|--------------|---------------|----------------------------|--------------|
| 1 | 0991 080803 | 1 | 22 | 565.13.151.00 | 1 |
| 2 | 565.03.061.300 | 1 | 26 | 565.13.156.000 | 1 |
| 3 | 502.03.060.444 | 1 | 27 | 0908 160153 | 1 |
| 4 | 0625 006087 | 4 | 28 | 565.13.158.000 | 1 |
| 5 | 490.03.051.000 | 1 | 29 | 565.13.157.000 | 1 |
| 6 | 502.03.053.000 | 1 | 40 | 502.13.138.000 | 1 |
| 7 | 740.03.021.000 | 1 | 41 | 0912 060203 | 2 |
| 8 | 543.10.086.000 | 1 | 42 | 502.13.161.000 | 2 |
| 9 | 502.03.075.000 | 1 | 43 | 0981 350953 | 2 |
| 10 | 580.03.067.000 | 1 | 44 | 502.13.038.000 | 1 |
| 11 | 580.03.069.000 | 1 | 45 | 502.13.160.000 | 1 |
| 12 | 0125 060003 | 1 | 50A | 420.13.226.000 | 1 |
| 13 | 0094 150223 | 1 | 50B | 420.13.026.000 | 1 |
| 14 | 502.03.062.000 | 1 | 51 | 545.13.025.000 | 1 |
| 15 | 0934 080003 | 1 | 52 | 120.10.012.000 | 1 |
| 16 | 502.03.068.000 | 1 | 53 | 502.13.214.000 | 1 |
| 20 | 565.13.101.144 | 1 | 54 | 502.13.215.000 | 1 |
| 21 | 565.13.150.000 | 1 | | | |

88-500.03.2

SCHWINGARM / SWINGARM

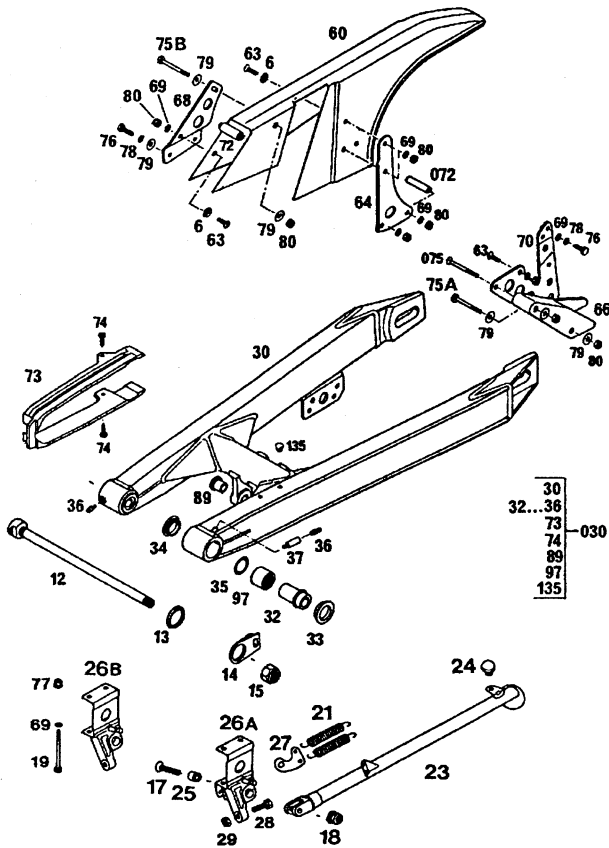


BILD. TEILENUMMER
FIG. PART NUMBER

| | |
|-----|----------------|
| 6 | 400.06.006.000 |
| 12 | 502.03.014.000 |
| 13 | 502.30.011.000 |
| 14 | 502.30.111.000 |
| 15 | 0985 141503 |
| 17 | 0991 080353 |
| 18 | 543.10.086.000 |
| 19 | 0931 060753 |
| 21 | 100.03.021.000 |
| 23 | 545.03.023.000 |
| 24 | 510.03.024.500 |
| 25 | 571.03.225.000 |
| 26A | 545.03.026.000 |
| 26B | 545.03.026.100 |
| 27 | 545.03.027.000 |
| 28 | 0933 080253 |
| 29 | 0934 080003 |
| 30 | 565.03.030.400 |
| 030 | 565.03.030.444 |
| 32 | 565.03.032.000 |
| 33 | 565.03.033.000 |
| 34 | 565.03.034.000 |
| 35 | 565.03.036.000 |
| 36 | 720.03.035.000 |

L=580

STK.
QTY.

BILD. TEILENUMMER
FIG. PART NUMBER

| | |
|-----|----------------|
| 37 | 545.03.098.000 |
| 60 | 502.07.060.000 |
| 63 | 0963 060163 |
| 64 | 544.07.064.000 |
| 66 | 565.07.066.000 |
| 68 | 502.07.068.000 |
| 69 | 0125 060003 |
| 70 | 565.07.070.400 |
| 72 | 501.07.072.000 |
| 072 | 543.07.072.000 |
| 73 | 545.07.073.000 |
| 74 | 0971 480193 |
| 75A | 0931 060503 |
| 75B | 0931 060553 |
| 075 | 0963 060553 |
| 76 | 0933 060203 |
| 77 | 565.09.064.000 |
| 78 | 0797 060003 |
| 79 | 0021 060003 |
| 80 | 0985 060003 |
| 89 | 565.03.089.300 |
| 97 | 560.03.097.100 |
| 135 | 544.03.135.000 |

STK.
QTY.

88-500.03.3

X = NACH BEDARF/as required

PRO-LEVER ANLENKUNG / PRO-LEVER SYSTEM

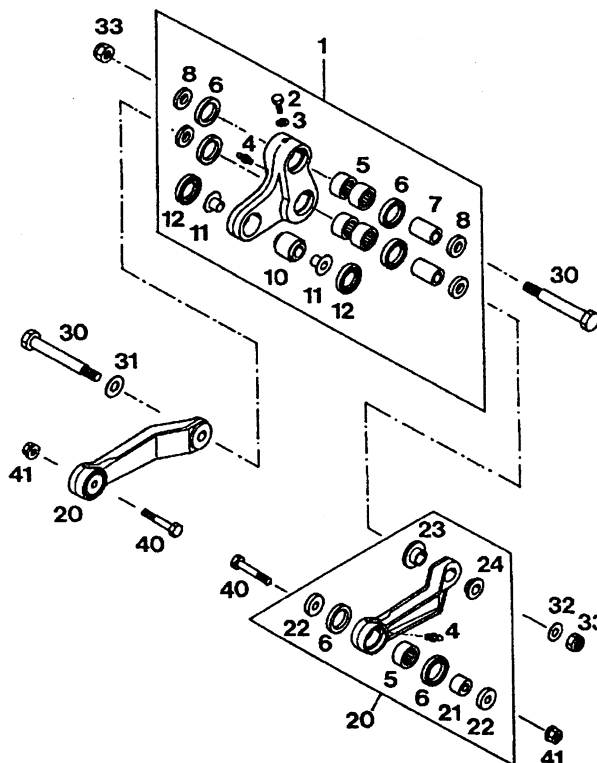


BILD. TEILENUMMER
FIG. PART NUMBER

| | | |
|----|----------------|---|
| 1 | 565.03.080.444 | 1 |
| 2 | 0933 060063 | 1 |
| 3 | 0125 060003 | 1 |
| 4 | 720.03.035.000 | 5 |
| 5 | 565.03.094.400 | 6 |
| 6 | 0760 222940 | 8 |
| 7 | 565.03.081.400 | 2 |
| 8 | 565.03.090.400 | 4 |
| 10 | 542.03.083.050 | 1 |
| 11 | 565.03.085.100 | 2 |
| 12 | 565.03.091.100 | 2 |
| 20 | 565.03.083.444 | 2 |
| 21 | 565.03.084.400 | 2 |
| 22 | 565.03.092.400 | 4 |
| 23 | 565.03.089.100 | 2 |
| 24 | 565.03.189.100 | 2 |
| 30 | 565.03.082.300 | 2 |
| 31 | 565.03.090.300 | 1 |
| 32 | 565.03.096.000 | 1 |
| 33 | 0985 100003 | 2 |
| 40 | 565.03.087.000 | 2 |
| 41 | 543.10.086.000 | 2 |

88-500.03.4

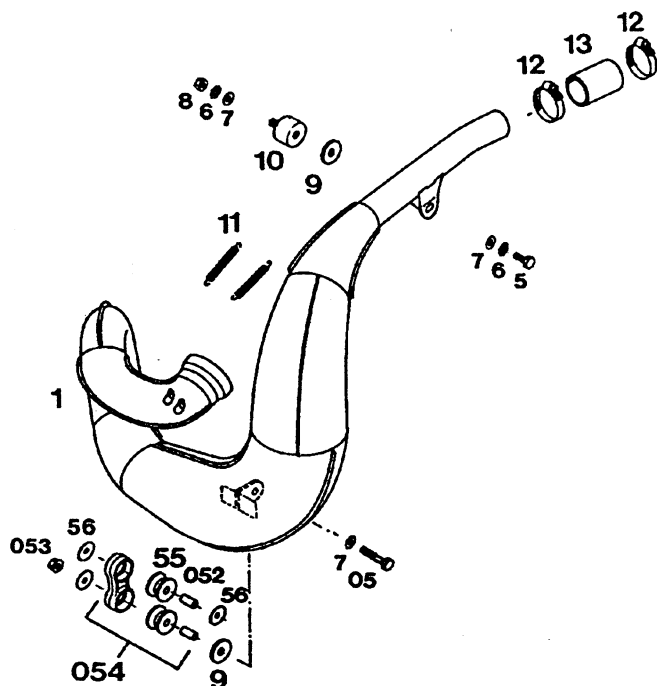
FEDERBEIN / SHOCK ABSORBER MARZOCCHI



| BILD. FIG. | TEILENUMMER PART NUMBER | STK. QTY. |
|---------------|----------------------------|--------------|
| 10 | 162003 | 1 |
| 86 | 565.03.086.000 | 1 |
| 93 | 565.03.093.000 | 1 |
| 94 | 565.03.096.000 | 4 |
| 95 | 0985 100003 | 2 |
| 124 | 543.12.024.000 | 2 |

88-500.04.2

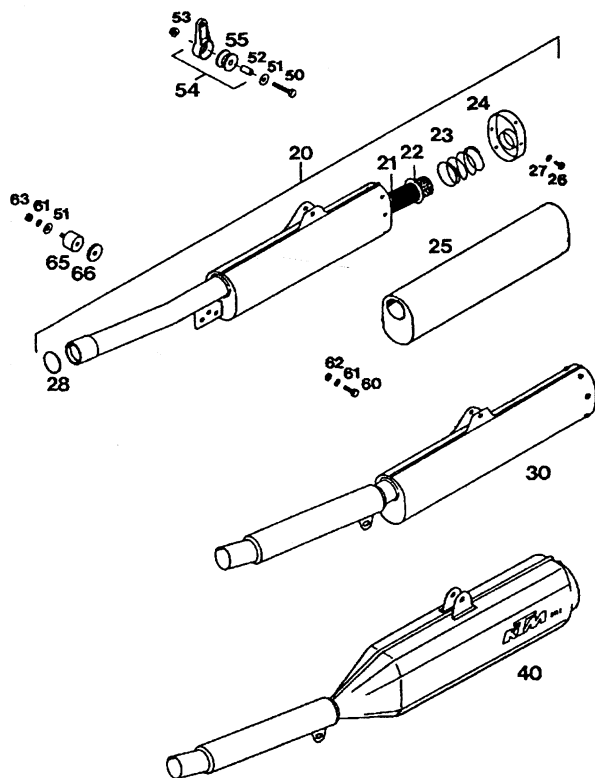
AUSPUFF / EXHAUST PIPE 250



| BILD. FIG. | TEILENUMMER PART NUMBER | STK. QTY. |
|---------------|----------------------------|--------------|
| 1 | 545.05.070.000 250 MX,E-XC | 1 |
| 1 | 545.05.570.000 250 E-GS | 1 |
| 5 | 0933 080163 | 1 |
| 05 | 0931 080353 | 1 |
| 6 | 0797 080003 | 2 |
| 7 | 0125 080003 | 3 |
| 8 | 0934 080003 | 1 |
| 9 | 510.05.067.000 | 2 |
| 10 | 510.05.062.100 | 1 |
| 11 | 510.05.063.000 | 2 |
| 12 | 543.05.058.000 | 2 |
| 13 | 543.05.057.000 | 1 |
| 052 | 565.05.069.000 | 2 |
| 053 | 543.10.086.000 | 1 |
| 054 | 565.05.065.044 | 1 |
| 55 | 543.05.068.000 | 2 |
| 56 | 0021 080003 | 3 |

88-545.05.1

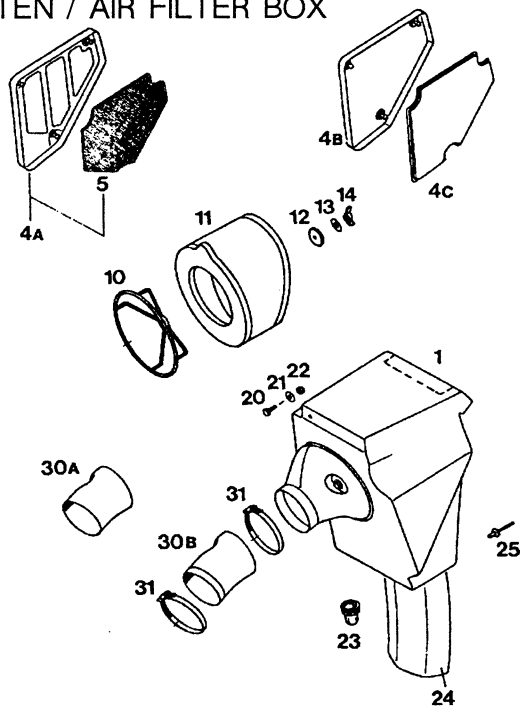
AUSP.SCHALLDAEMPFER / EXHAUST SILENCER



88-555.05.2

| BILD. FIG. | TEILENUMMER PART NUMBER | | STK. QTY. |
|---------------|----------------------------|-------------------|--------------|
| 20 | 565.05.079.400 | 250-500 MX | 1 |
| 21 | 565.05.052.300 | | 1 |
| 22 | 565.05.053.300 | | 1 |
| 23 | 310.06.018.000 | | 1 |
| 24 | 565.05.171.100 | | 1 |
| 25 | 565.05.079.355 | | 1 |
| 26 | 0981 480953 | | 6 |
| 27 | 0797 050003 | | 6 |
| 28 | 0770 020261 | | 1 |
| 30 | 545.05.079.206 | SIX DAY 460 mm | 1 |
| 40 | 545.05.080.100 | 250 E-GS | 1 |
| 40 | 555.05.080.100 | 350 RALLY | 1 |
| 50 | 0931 060303 | | 1 |
| 51 | 0021 060003 | | 2 |
| 52 | 543.05.069.000 | | 1 |
| 53 | 565.09.064.000 | | 1 |
| 54 | 543.05.065.044 | | 1 |
| 55 | 543.05.068.000 | | 1 |
| 60 | 0933 060163 | | 1 |
| 61 | 0797 060003 | | 2 |
| 62 | 120.11.016.000 | | 1 |
| 63 | 0934 060003 | | 1 |
| 65 | 432.06.062.000 | | 1 |
| 66 | 510.05.067.000 | | 1 |

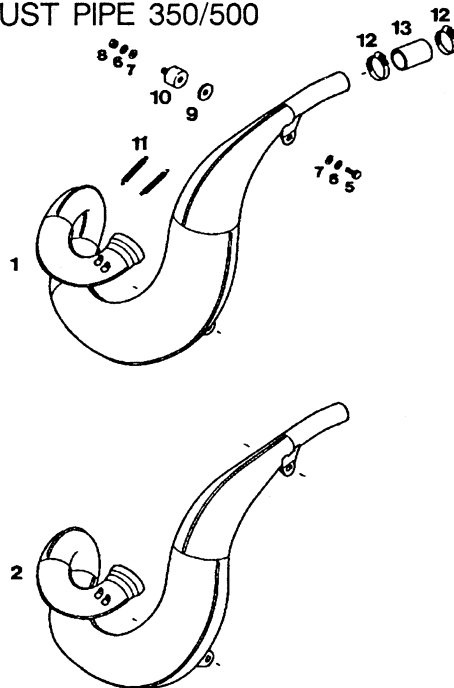
FILTERKASTEN / AIR FILTER BOX



88-545.06.1

| BILD. FIG. | TEILENUMMER PART NUMBER | | STK. QTY. |
|---------------|----------------------------|---------|--------------|
| 1 | 545.06.001.000 | MX | 1 |
| 1 | 545.06.501.000 | ENDURO | 1 |
| 4A | 545.06.002.000 | MX | 1 |
| 4B | 545.06.502.050 | ENDURO | 1 |
| 4C | 545.06.502.051 | ENDURO | 1 |
| 5 | 545.06.002.052 | | 1 |
| 10 | 501.06.016.000 | | 1 |
| 11 | 565.06.015.000 | | 1 |
| 12 | 510.05.067.000 | | 1 |
| 13 | 510.06.097.000 | | 1 |
| 14 | 560.03.076.000 | | 1 |
| 20 | 0933 060163 | | 1 |
| 21 | 0021 060003 | | 3 |
| 22 | 0985 060003 | | 1 |
| 23 | 502.06.020.000 | | 1 |
| 24 | 502.06.010.000 | | 1 |
| 25 | 432.06.043.000 | | 2 |
| 30A | 545.06.026.000 | 250 | 1 |
| 30B | 565.06.026.000 | 350/500 | 1 |
| 31 | 550.06.028.000 | | 2 |

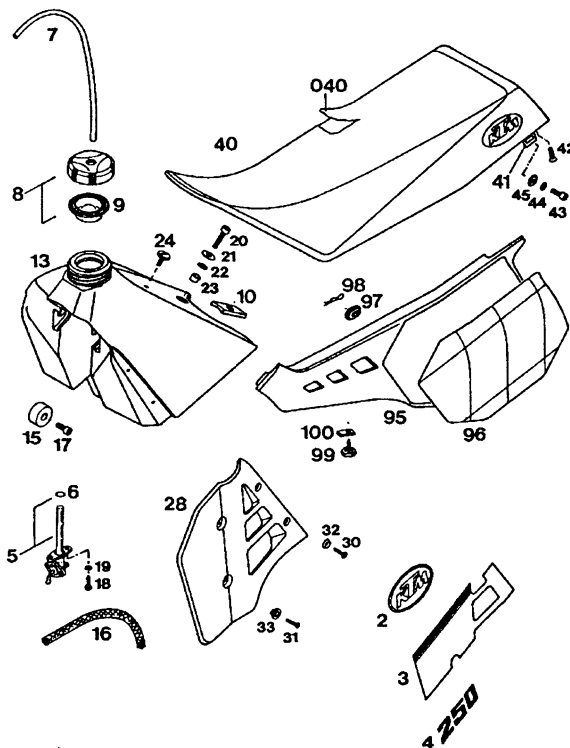
AUSPUFF / EXHAUST PIPE 350/500



87-555.05.1

| BILD. FIG. | TEILENUMMER PART NUMBER | | STK. QTY. |
|---------------|----------------------------|---------------------|--------------|
| 1 | 565.05.070.300 | 500 MX | 1 |
| 2 | 555.05.070.300 | 350 MX/ 350 E-XC | 1 |
| 2 | 555.05.570.300 | 350 E-GS | 1 |
| 5 | 0933 080163 | | 2 |
| 6 | 0797 080003 | | 4 |
| 7 | 0125 080003 | | 4 |
| 8 | 0934 080003 | | 2 |
| 9 | 510.05.067.000 | | 2 |
| 10 | 510.05.062.100 | | 2 |
| 11 | 510.05.063.000 | | 2 |
| 12 | 543.05.058.000 | | 2 |
| 13 | 543.05.057.000 | | 1 |

TANK, SITZBANK, VERKL. / TANK, SEAT, S. COVERS

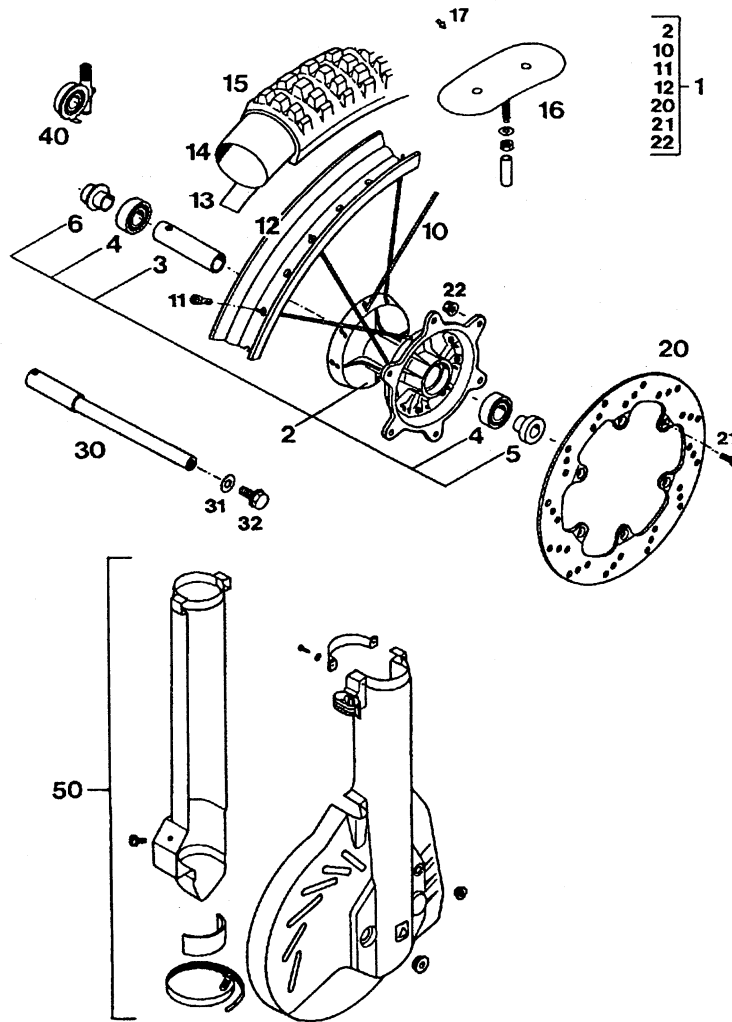


88-545.07.1

| BILD. FIG. | TEILENUMMER PART NUMBER | STK. QTY. | BILD. FIG. | TEILENUMMER PART NUMBER | STK. QTY. | BILD. FIG. | TEILENUMMER PART NUMBER | STK. QTY. |
|---------------|----------------------------|--------------|---------------|----------------------------|--------------|---------------|----------------------------|--------------|
| 2 | 502.07.002.100 | 2 | 5 | 550.07.005.300 | 1 | 96 | 502.08.096.051 | 1 |
| 3 | 502.07.003.100 | 1 | | OFF-ON | | 96 | 502.08.092.080 | 1 |
| - | 502.07.103.100 | 1 | 6 | 550.07.006.200 | 1 | | | yellow |
| 4 | 502.07.003.250 | 1 | 7 | 310.07.007.001 | 0,32 m | - | 502.08.196.020 | 1 |
| 4 | 502.07.003.350 | 1 | 8 | 560.07.008.144 | 1 | | | white |
| 4 | 502.07.003.500 | 1 | 9 | 560.07.009.100 | 1 | - | 502.08.196.051 | 1 |
| - | 502.07.103.250 | 1 | 10 | 543.07.010.000 | 1 | | | green |
| - | 502.07.103.350 | 1 | 13 | 545.07.013.000 | 1 | - | 502.08.196.080 | 1 |
| - | 502.07.103.500 | 1 | 15 | 501.07.015.000 | 2 | | | yellow |
| 5 | 550.07.005.200 | 1 | 16 | 570.07.016.001 | 0,18 m | 97 | 542.08.042.000 | 3 |
| | OFF-ON-RES | | 17 | 0912 080163 | 2 | 98 | 543.08.043.002 | 2 |
| | | | 18 | 0676 550223 | 2 | 99 | 100.07.076.100 | 1 |
| | | | | | | 100 | 310.05.042.000 | 1 |

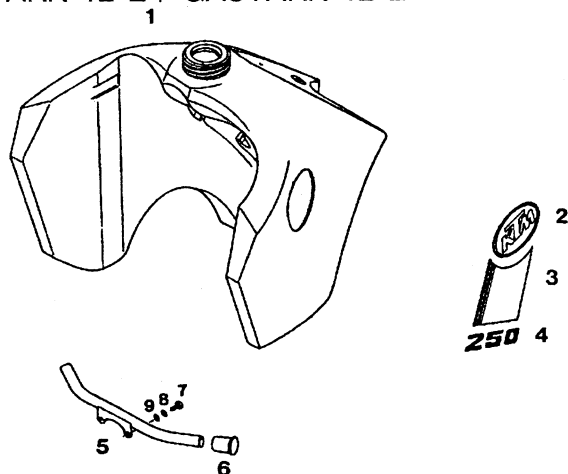
| BILD. FIG. | TEILENUMMER PART NUMBER | STK. QTY. |
|---------------|----------------------------|--------------|
| 19 | 0797 050003 | 2 |
| 20 | 0912 080353 | 1 |
| 21 | 0021 080003 | 1 |
| 22 | 0797 080003 | 1 |
| 23 | 571.03.225.000 | 1 |
| 24 | 545.07.011.000 | 1 |
| 28 | 502.35.028.000 | L/S 1 |
| - | 502.35.029.000 | R/S 1 |
| 30 | 0983 550223 | 4 |
| 31 | 0966 050203 | 4 |
| 32 | 400.06.006.000 | 4 |
| 33 | 565.35.036.000 | 4 |
| 40 | 502.07.040.400 | HIGH 1 |
| - | 502.07.040.300 | LOW 1 |
| 040 | 502.07.040.450 | 1 |
| 41 | 580.07.041.000 | 2 |
| 42 | 0965 060163 | 4 |
| 43 | 0912 080163 | 2 |
| 44 | 0797 080003 | 2 |
| 45 | 140.04.030.000 | 2 |
| 95 | 502.08.041.000 | L/S 1 |
| - | 502.08.075.000 | R/S 1 |
| 96 | 502.08.096.020 | L/S 1 |
| | | white |
| 96 | 502.08.096.051 | L/S 1 |
| | | green |
| 96 | 502.08.092.080 | L/S 1 |
| | | yellow |
| - | 502.08.196.020 | R/S 1 |
| | | white |
| - | 502.08.196.051 | R/S 1 |
| | | green |
| - | 502.08.196.080 | R/S 1 |
| | | yellow |
| 97 | 542.08.042.000 | 3 |
| 98 | 543.08.043.002 | 2 |
| 99 | 100.07.076.100 | 1 |
| 100 | 310.05.042.000 | 1 |

VORDERRAD / FRONT WHEEL



| BILD. FIG. | TEILENUMMER PART NUMBER | STK. QTY. |
|---------------|----------------------------|--------------|
| 1 | 565.09.001.444 | 1 |
| 2 | 565.09.010.444 | 1 |
| 3 | 565.09.011.400 | 1 |
| 4 | 0625 060037 | 2 |
| 5 | 565.09.051.400 | 1 |
| 6 | 565.09.052.400 | 1 |
| 10 | 565.09.071.400 | 36 |
| 11 | 565.09.072.000 | 36 |
| 12 | 565.09.070.400 | 1 |
| 13 | 510.09.073.000 | 1 |
| 14 | 510.09.075.000 | 1 |
| 15 | 510.09.074.000 | 1 |
| 15 | 501.09.074.000 | 1 |
| 15 | 501.09.074.100 | 1 |
| 15 | 545.09.074.000 | 1 |
| 15 | 571.09.074.000 | 1 |
| 16 | 510.09.100.100 | 1 |
| 17 | 550.09.099.100 | 10 |
| 20 | 565.09.060.400 | 1 |
| 21 | 0991 060203 | 6 |
| 22 | 565.09.064.000 | 6 |
| 30 | 565.09.081.000 | 1 |
| 31 | 0125 100003 | 1 |
| 32 | 490.32.011.000 | 1 |
| 40 | 565.11.052.400 | 1 |
| 40 | 565.11.052.500 | 1 |
| 50 | 565.13.180.444 | 1 |

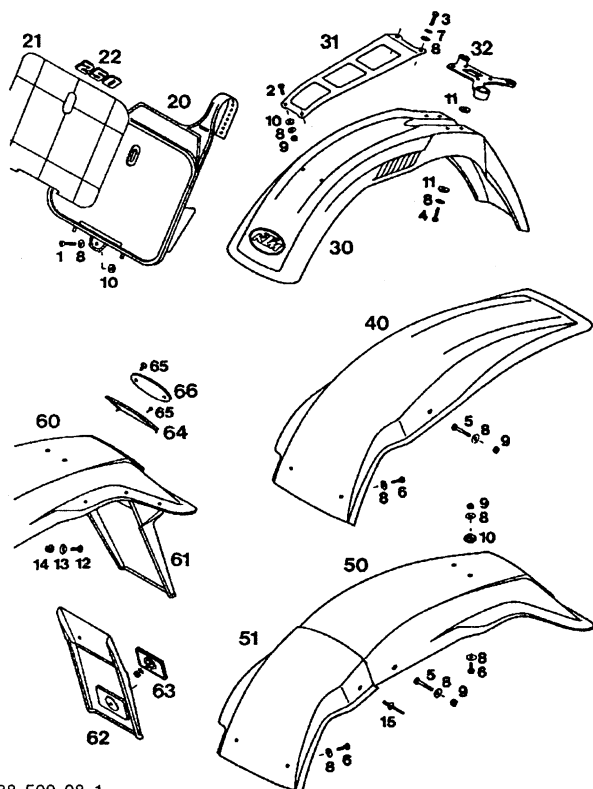
ENDURO-TANK 12 L / GASTANK 12 L



88-545.07.2

| BILD. FIG. | TEILENUMMER PART NUMBER | STK. QTY. |
|------------|-------------------------|-----------|
| 1 | 545.07.013.100 | 1 |
| 2 | 502.07.002.100 | 2 |
| 3 | 502.07.003.200 L/S | 1 |
| - | 502.07.103.200 R/S | 1 |
| 4 | 502.07.003.250 250 L/S | 1 |
| 4 | 502.07.003.350 350 L/S | 1 |
| - | 502.07.103.250 250 R/S | 1 |
| - | 502.07.103.350 350 R/S | 1 |
| 5 | 545.07.012.000 | 1 |
| 6 | 545.07.012.050 | 2 |
| 7 | 0933 060123 | 2 |
| 8 | 0797 060003 | 2 |
| 9 | 0125 060003 | 2 |

KOTFLUEGEL / FENDERS

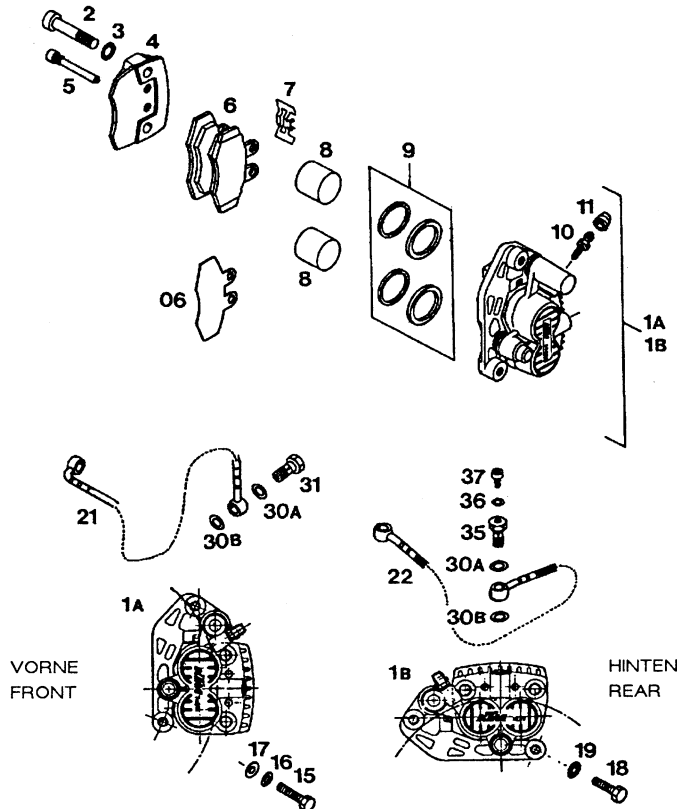


88-500.08.1

| BILD. FIG. | TEILENUMMER PART NUMBER | STY.. QTY. | BILD. FIG. | TEILENUMMER PART NUMBER | STK. QTY. |
|------------|-------------------------|------------|------------|-------------------------|-----------|
| 1 | 0912 060253 | 2 | 21 | 502.01.096.051 green | 1 |
| 2 | 0966 050163 | 2 | 21 | 502.01.096.020 white | 1 |
| 3 | 0933 060163 | 2 | 21 | 502.01.096.080 yellow | 1 |
| 4 | 0933 060253 | 4 | 22 | 502.03.129.250 250 | 1 |
| 5 | 0931 060353 | 1 | 22 | 502.03.129.500 500 | 1 |
| | 0931 060303 | 1 | 30 | 502.08.010.000 | 1 |
| 6 | 0933 060203 | 4 | 31 | 570.08.009.000 | 1 |
| 7 | 0797 060003 | 2 | 32 | 543.08.019.000 | 1 |
| 8 | 0021 060003 | 18 | 40 | 502.08.014.000 | 1 |
| 9 | 0985 060003 | 8 | 50 | 502.08.113.000 | 1 |
| 10 | 510.05.082.100 | 4 | 51 | 502.08.014.050 | 1 |
| 11 | 510.05.082.200 | 8 | 60 | 502.08.013.000 | 1 |
| 12 | 0966 060163 | 6 | 61 | 572.08.013.051 | 1 |
| 13 | 449.12.054.500 | 6 | 62 | 490.08.216.000 | X |
| 14 | 565.09.064.000 | 6 | 63 | 510.12.080.000 | X |
| 15 | 432.06.043.000 | 2 | 64 | 572.08.013.050 | 1 |
| 20 | 502.01.095.000 | 1 | 65 | 0982 350953 | 4 |
| | | | 66 | 490.07.002.000 | 1 |

X = NACH BEDARF/as required

BREMSSATTEL / CALIPER



88-500.09.2

BILD. TEILENUMMER
FIG. PART NUMBER

STK.
QTY.

BILD. TEILENUMMER
FIG. PART NUMBER

STK.
QTY.

| | | | |
|----|----------------|-------|---|
| 1A | 565.13.201.544 | 28 mm | |
| | VORNE/front | | 1 |
| 1B | 565.13.301.544 | 25 mm | |
| | HINTEN/rear | | 1 |
| 2 | 0912 100453 | | 4 |
| 3 | 360.03.014.200 | | 4 |

| | | | |
|---|----------------|------------|---|
| 4 | 565.13.202.400 | | 2 |
| 5 | 565.13.210.400 | | 4 |
| 6 | 565.13.209.544 | ORGAN.243 | 1 |
| | VORNE/front | | |
| 6 | 565.13.209.444 | SINTER 518 | X |
| | VORNE/front | | |

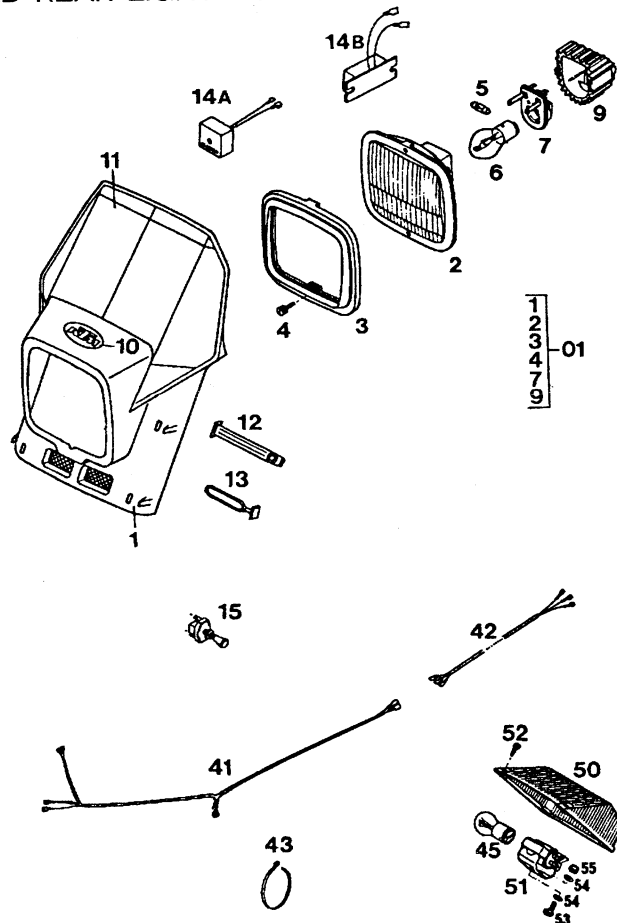
BILD. TEILENUMMER
FIG. PART NUMBER

STK.
QTY.

| | | | |
|-----|----------------|------------|---|
| 6 | 565.13.309.544 | ORGAN 243 | 1 |
| | HINTEN/rear | | |
| 6 | 565.13.309.444 | SINTER 532 | X |
| | HINTEN/rear | | |
| 06 | 565.13.206.400 | 1 mm | X |
| 06 | 565.13.206.500 | 2 mm | X |
| 06 | 565.13.209.450 | 3 mm | X |
| 7 | 565.13.211.400 | | 2 |
| 8 | 565.13.205.400 | 28 mm | 2 |
| | VORNE/front | | |
| 8 | 565.13.305.400 | 25 mm | 2 |
| | HINTEN/rear | | |
| 9 | 565.13.250.400 | 28 mm | 1 |
| | VORNE/front | | |
| 9 | 565.13.350.400 | 25 mm | 1 |
| | HINTEN/rear | | |
| 10 | 420.13.214.000 | | 2 |
| 11 | 420.13.215.000 | | 2 |
| 15 | 0931 080303 | | 2 |
| 16 | 0797 080003 | | 2 |
| 17 | 0125 080003 | | 2 |
| 18 | 0931 080253 | | 2 |
| 19 | 360.03.014.000 | | 2 |
| 21 | 502.13.029.100 | | 1 |
| 22 | 502.13.027.100 | | 1 |
| 30A | 420.13.026.000 | 10x16x1.5 | 2 |
| 30B | 420.13.226.000 | 10x16x1 | 2 |
| 31 | 502.13.025.000 | | 1 |
| 35 | 502.13.025.100 | | 1 |
| 36 | 502.13.026.000 | | 1 |
| 37 | 0912 050083 | | 1 |

X = NACH BEDARF/as required

SCHEINWERFER, RUECKLIGHT / HEAD AND REAR LIGHT ACERBIS

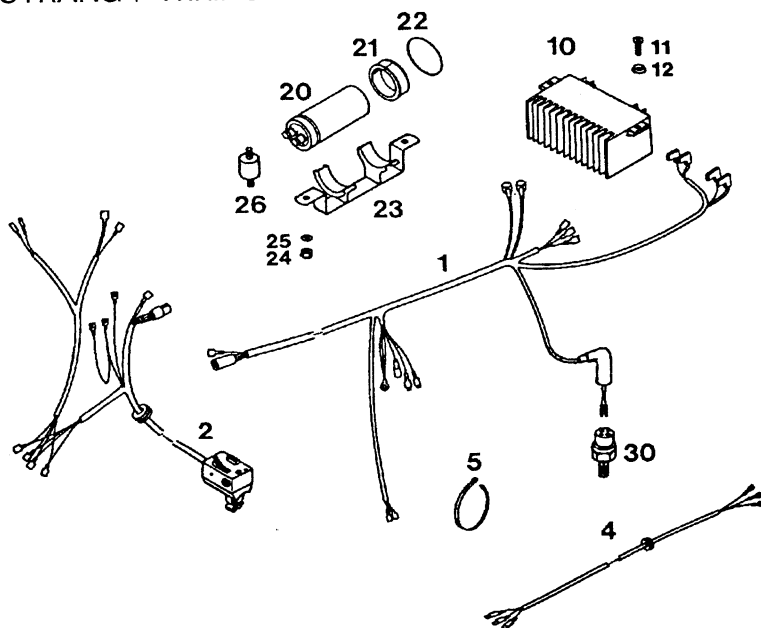


87-545.11.1

| BILD. FIG. | TEILENUMMER PART NUMBER | STK. QTY. |
|---------------|----------------------------|--------------|
| 01 | 502.11.101.044 | 1 |
| 2 | 570.11.002.000 | 1 |
| 3 | 570.11.003.000 | 1 |
| 4 | 570.11.031.000 | 1 |
| 5 | 570.11.005.000 12V/3W | 1 |
| 6 | 441.11.038.000 12V 35/35 W | 1 |
| 6 | 310.11.038.100 6V 35/35 W | 1 |
| 7 | 570.11.036.000 | 1 |
| 9 | 570.11.009.000 | 1 |
| 10 | 490.01.097.000 | 1 |
| 11 | 502.01.196.020 | 1 |
| 11 | 502.01.196.080 | 1 |
| 12 | 572.06.003.000 | X |
| 13 | 550.11.186.000 | 4 |
| 14A | 544.11.034.000 250 E-XC | 1(2) |
| 14B | 420.11.034.100 6V 350 E-XC | 1 |
| 15 | 550.11.599.000 | 1(2) |
| 41 | 542.11.075.026 | 1 |
| 42 | 510.11.075.051 | 1 |
| 43 | 440.11.076.180 | X |
| 45 | 570.11.045.000 12V 21/5 W | 1 |
| 45 | 520.11.045.100 6V 18/5 W | 1 |
| 50 | 565.11.041.000 | 1 |
| 51 | 565.11.044.000 | 1 |
| 52 | 0981 290133 | 1 |
| 52 | 0985 040103 | 1 |
| 54 | 0125 040003 | 2 |
| 55 | 0985 040003 | 1 |

X = NACH BEDARF/as required

KABELSTRANG / WIRING HARNESS

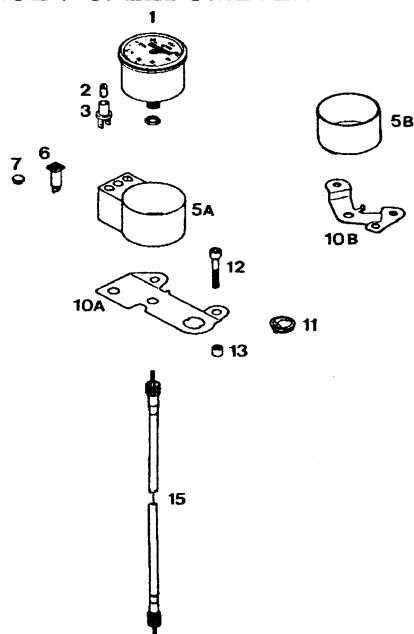


88-545.11.5

| BILD. FIG. | TEILENUMMER PART NUMBER | STK. QTY. |
|---------------|----------------------------|--------------|
| 1 | 545.11.075.000 | 1 |
| 2 | 545.11.099.000 | 1 |
| 4 | 510.11.075.051 | 1 |
| 5 | 440.11.076.180 | X |
| 10 | 491.11.434.000 | 1 |
| 11 | 0966 060163 | 2 |
| 12 | 400.06.006.000 | 2 |
| 20 | 491.11.435.000 | 1 |
| 21 | 520.06.029.000 | 2 |
| 22 | 0770 021160 | 2 |
| 23 | 545.11.249.000 | 1 |
| 24 | 0985 060003 | 2 |
| 25 | 0125 060003 | 2 |
| 26 | 543.35.031.000 | 2 |
| 30 | 420.13.121.000 | 1 |

X = NACH BEDARF/as required

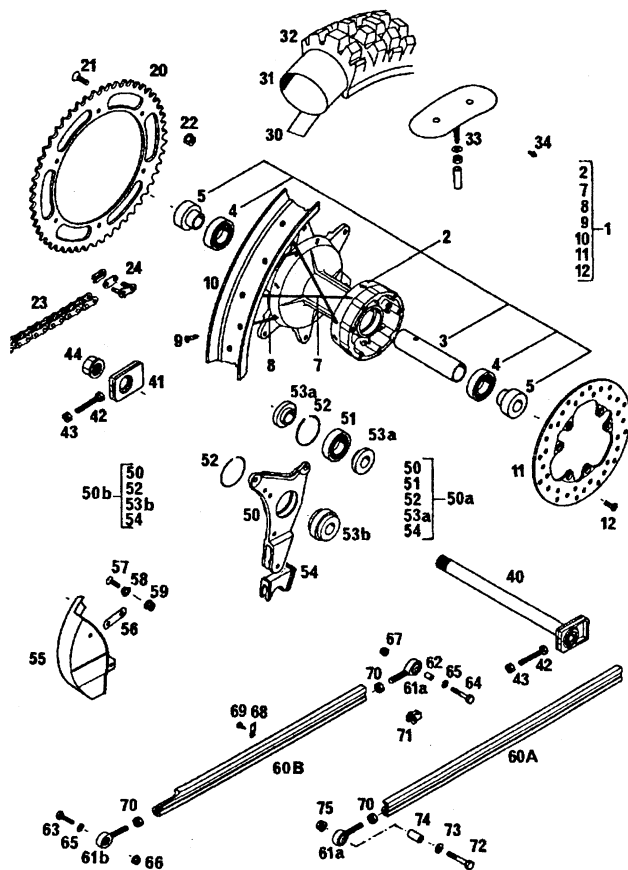
TACHOANLAGE / SPEEDOMETER



| BILD. FIG. | TEILENUMMER PART NUMBER | STK. QTY. |
|-----------------------------|-------------------------|-----------|
| 1 | 550.11.080.000 | 1 |
| 2 | 441.11.025.000 | 1 |
| 3 | 330.11.069.000 | 1 |
| 5A | 580.11.068.000 | 1 |
| 5B | 570.11.068.000 | 1 |
| 6 | 446.11.264.000 | 1 |
| | GELB 12V yellow | |
| 6 | 580.11.021.000 | 1 |
| | BLAU 12V blue | |
| 7 | 361.11.021.000 | X |
| 10A | 580.11.030.000 | 1 |
| 10B | 570.11.030.000 | 1 |
| 11 | 160.11.020.000 | X |
| 12 | 0912 080403 | 2 |
| 13 | 571.03.225.000 | 2 |
| 15 | 565.11.088.400 1020 mm | 1 |
| 15 | 565.11.088.500 1025 mm | 1 |
| | USA | |
| X = NACH BEDARF/as required | | |

| BILD. FIG. | TEILENUMMER PART NUMBER | STK. QTY. |
|------------|--|--------------|
| 32 | 540.10.074.000 4.50-18 MOTOCROSS | 1 |
| 32 | 501.10.074.000 4.60-18 PERFECT CROSS | 1 |
| 32 | 564.10.074.000 5.10-18 PERFECT CROSS | 1 |
| 32 | 571.10.074.000 4.00-18 ENDURO | 1 |
| 33 | 510.10.100.100 1.85 MX | 2 |
| 33 | 540.10.100.100 2.15 MX | 2 |
| 33 | 564.10.100.100 2.50 MX | 2 |
| 34 | 550.09.099.000 ENDURO | 10 |
| 40 | 502.10.085.000 | 1 |
| 41 | 565.10.084.000 | 1 |
| 42 | 0933 080453 | 2 |
| 43 | 0934 080003 | 2 |
| 44 | 543.10.099.000 | 1 |
| 50A | 565.10.040.400 | X |
| 50B | 565.10.040.500 | 1 |
| 51 | 0625 060057 | X |
| 52 | 565.10.041.000 | 1 |
| 53A | 565.10.015.000 | X |
| 53B | 502.10.515.000 | 1 |
| 54 | 565.10.042.000 | 1 |
| 55 | 565.13.081.400 | 1 |
| 56 | 565.13.084.400 | 1 |
| 57 | 0963 060203 | 2 |
| 57 | 0963 060163 | 1 |
| 58 | 400.06.006.000 | 3 |
| 59 | 565.09.064.000 | 3 |
| 60A | 565.03.178.480 480 mm 250-500 MX | X |
| 60B | 565.03.278.425 425 mm 250/350 E-GS | 1 |
| 60B | 565.03.278.440 440 mm 250/500 MX,E-XC | 1 |
| 61A | 565.03.079.100 | 1 |
| 61B | 565.03.179.144 | 1 |
| 62 | 565.03.079.051 | 1 |
| 63 | 0931 060253 | 1 |
| 64 | 0931 060303 | 1 |
| 65 | 0125 060003 | 2 |
| 66 | 565.09.064.000 | 1 |
| 67 | 0985 060003 | 1 |
| 68 | 565.03.077.000 | 3 |
| 69 | 0981 420953 | 3 |
| 70 | 0439 100013 | 2 |
| 71 | 565.03.079.151 | 1 |
| 72 | 0931 080503 | X |
| 73 | 0125 080003 | X |
| 74 | 490.03.051.000 | X |
| 75 | 543.10.086.000 | X |

X = NACH BEDARF/as required



88-500.10.2

| BILD. FIG. | TEILENUMMER PART NUMBER | STK. QTY. | BILD. FIG. | TEILENUMMER PART NUMBER | STK. QTY. |
|------------|---|-----------|------------|---------------------------------|-----------|
| 1 | 545.10.001.444 2.15 250 MX, 250/350 ENDURO | 1 | 22 | 543.10.086.000 | 6 |
| 1 | 565.10.001.444 2.50 350/500 MX (250/350 ENDURO) | 1 | 23 | 500.10.065.000 | 1 |
| 2 | 565.10.010.444 | 1 | 23 | 500.10.065.001 PER METER | X |
| 3 | 565.10.011.000 | 1 | 24 | 500.10.066.000 | 1 |
| 4 | 0625 060058 | 2 | 23 | 530.10.065.118 O-RING 118 R | X |
| 5 | 565.10.016.400 | 2 | 24 | 530.10.066.000 O-RING | 1 |
| 7 | 565.10.071.400 L/S M5X187-160G | 18 | 30 | 520.10.073.000 | 1 |
| 8 | 565.10.171.000 R/S M5X186-173G | 18 | 31 | 540.10.075.000 4.00/ 4.50-18 | 1 |
| 9 | 565.09.072.000 | 36 | 31 | 563.10.075.000 5.10-18 | 1 |
| 10 | 544.10.070.000 2.15-18 | 1 | 32 | 545.10.074.000 | 1 |
| 10 | 565.10.070.000 2.50-18 | 1 | | 110/110-18 DUNLOP | |
| 11 | 565.10.060.400 | 1 | 32 | 565.10.074.000 | 1 |
| 12 | 0991 060163 | 6 | | 120/100-18 DUNLOP | |
| 20 | 543.10.051.052 52 Z. | X | 32 | 543.10.074.200 | 1 |
| 20 | 543.10.051.050 50 Z. | 1 | | 120/80-18 MXR 196 | |
| 20 | 543.10.051.048 48 Z. | 1 | 32 | 543.10.074.300 | 1 |
| 20 | 543.10.051.045 45 Z. | 1 | | 130/80-18 MXR 196 | |
| 21 | 0991 080253 | 6 | 32 | 543.10.074.500 | 1 |
| | | | | 120/90-18 MXE | |
| | | | 32 | 543.10.074.600 | 1 |
| | | | | 130/80-18 MXE | |

X = NACH BEDARF/as required

All the other executions please refer Microfiche

240-250 '88 Art Nr. 202.74
350-500 '88 Art Nr. 202.75



KTM Motor - Fahrzeugbau
Aktiengesellschaft
5320 Mattinghoffen - Austria